

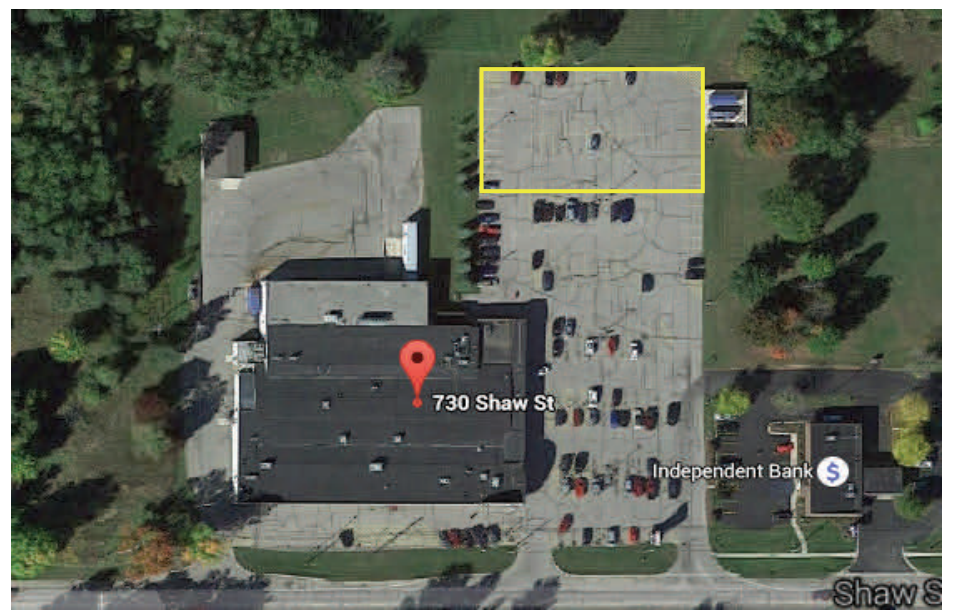


BUILD TO SUIT

730 W Shaw St, Howard City 5,000 sf

Features:

- ◆ 5,000 sq. ft.
- ◆ Build to Suit
- ◆ Lease or Sale
- ◆ Access to Super-market Parking Lot



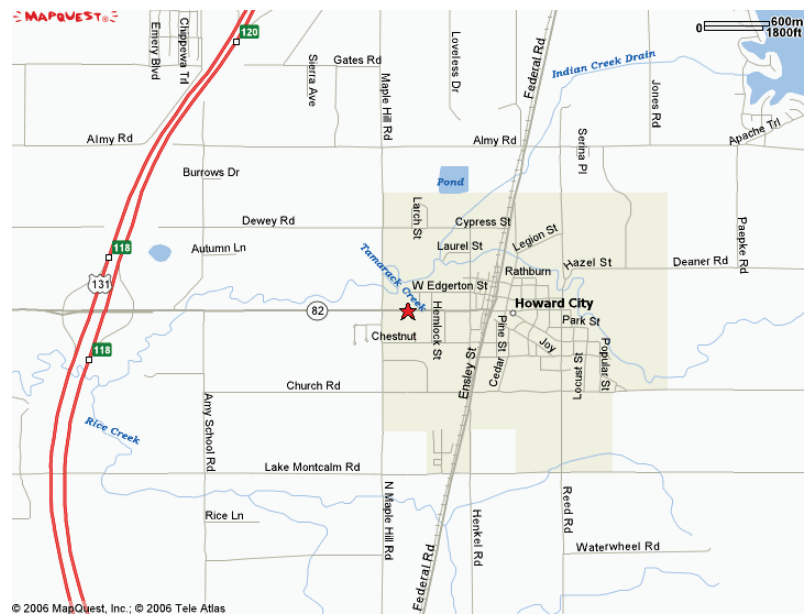
Why locate here?

- ◆ #1 retail center in Howard City & vicinity
- ◆ Close proximity to US 131

For complete information
Contact:

Dave Kwekel, CCIM

(616) 583-1200



© 2006 MapQuest, Inc.; © 2006 Tele Atlas

BUILD TO SUIT

730 W Shaw St.

SIZE: 5,000 sq. ft.

LOCATION: One mile east of US 131 Howard City exit

**GENERAL BUILDING
FEATURES:**

Construction: Brick/Glass
Heat: Gas/Forced Air
Ceiling Height: 8' - 16'
Lighting: Fluorescent
Roof: Rubber
Sprinklered: Yes
Parking: Off-street ample
Year Built: 2000

**GENERAL INTERIOR
FEATURES:**

Air Conditioning: 100%
Ceiling: 8' - 16'
Construction: Drywall
Windows: Thermal
Heat: Gas/Forced Air
Restrooms: Yes

UTILITIES: All municipal utilities available.

PERMANENT PARCEL #: 59-047-255-002-00

MUNICIPALITY: Reynolds Township

ZONING: 201 Commercial

PRICE & TERMS: \$9.50 per square foot per year or \$3,958.00 per month with tenant paying all costs of taxes and insurance, utilities, grounds and building maintenance along with annual cost of living adjustment in the rental. Term: 36-60 mo. Lessor to approve use & credit.

POSSESSION: At Close

For More Information

Contact:

Dave Kwekel, CCIM
Dave Kwekel Development, LLC
7660 Clyde Park Ave. SW
Byron Center, Michigan 49315
Telephone: 616-583-1200
Fax: 616-583-1201

SEE OUR WEBSITE AT:

<http://www.dkwekel.com>

THIS INFORMATION HAS BEEN FURNISHED FROM SOURCES WHICH WE DEEM RELIABLE, BUT FOR WHICH WE ASSUME NO LIABILITY.